

Table with columns: PANDUIT PART #, WIRE RANGE (AWG, [mm²]), WIRE STRIP LENGTH (+1/32 -0 [+0,8 -0]), DIMENSIONS in. [mm] (L, ID-1, OD-1, OD-2), INSTALLATION TOOLS.

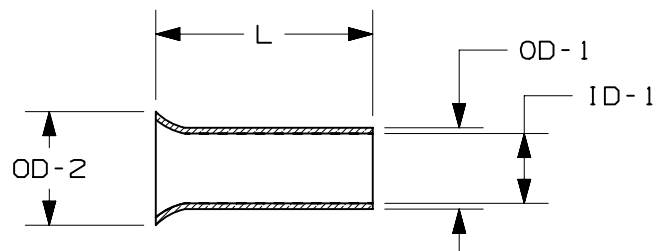
Table with columns: PANDUIT PART #, WIRE RANGE (AWG, [mm²]), WIRE STRIP LENGTH (+1/32 -0 [+0,8 -0]), DIMENSIONS in. [mm] (L, ID-1, OD-1, OD-2), INSTALLATION TOOLS.

Table with columns: PANDUIT PART #, WIRE RANGE (AWG, [mm²]), WIRE STRIP LENGTH (+1/32 -0 [+0,8 -0]), DIMENSIONS in. [mm] (L, ID-1, OD-1, OD-2), INSTALLATION TOOLS/DIES.

NOTES:
1. USED FOR:
A. STRANDED COPPER WIRE ONLY
B. 221°F [105°C] MAX. OPERATING TEMPERATURE
2. MATERIAL:
A. STAMPING: COPPER, TIN PLATED
3. SEE www.panduit.com FOR PACKAGE QUANTITIES
4. DIMENSIONS IN BRACKETS ARE METRIC EQUIVALENT
5. FOR TOLERANCING REFER TO DIN 46228 PART 1



* DIES USED WITH CT-3001 OR CT-3001/E TOOL



Revision table with columns: REV, DATE, BY, CHK, APR, DESCRIPTION, ECN.

Engineering drawing title block containing: TITLE (FERRULES - NO SLEEVE), CUSTOMER DRAWING, ITEM REVISION NAME, DATASET FILE NAME, PANDUIT logo, MATERIAL, UNLESS OTHERWISE SPECIFIED, DIMENSIONAL TOLERANCES ARE: IN [mm], DRAWING NUMBER (A41670), and scale (N.T.S.).